



**This document explains how to install the ICC Printer profiles for the Epson Stylus Photo925 and Photo935 with Lyson Fotonic Inks. There are five profiles available which are suitable for the following papers:**

**Lyson 170gsm Matt Paper.**

**Lyson 240gsm Professional Colour Photo Gloss Paper.**

**Lyson Fine Art Paper (All Varieties).**

**Lyson Darkroom Gloss Paper**

**Lyson Darkroom Matt Paper**

**Using the profiles is a simple process. Once you have made the correct settings in the print driver you can then select the profile for your paper and the software will do the rest.**

**For more information on how ICC printer profiles work, setting up Photoshop and calibrating your monitor for accurate colour display, as well as frequently asked questions and troubleshooting, download the “Colour Management 2003” pdf document from the Technical page of the Lyson website, [www.lyson.com](http://www.lyson.com).**

**PC Setup Advice.**

**Photoshop places heavy demands upon your PC. Ensure that you have as much RAM installed as you can afford.**

**There are a large variety of windows operating systems on the market today. Photoshop performance varies only slightly from one operating system to another. Lyson recommends Windows 2000 due to the length of time it has been on the market and it's support for the largest number of print drivers. Lyson printer profiles are compatible with all Microsoft© operating systems.**

# Epson Stylus Photo 925 and 935 Printer Profile Instructions

PC, Photoshop 5/6/7

## Step 1.

Drag and drop or cut & paste the profiles into the “Color” folder

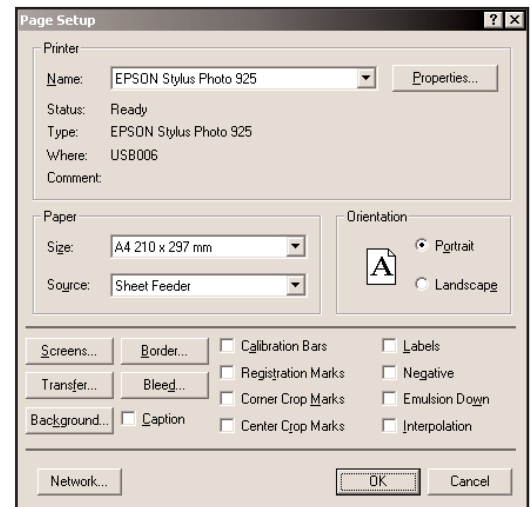
C:/WINDOWS/system32/spool/drivers/color (windows XP)

C:/windows/system/color (Windows 95/8)

C:/winNT/system32/color (Windows 2000/WindowsNT)

## Step 2.

Restart Photoshop.



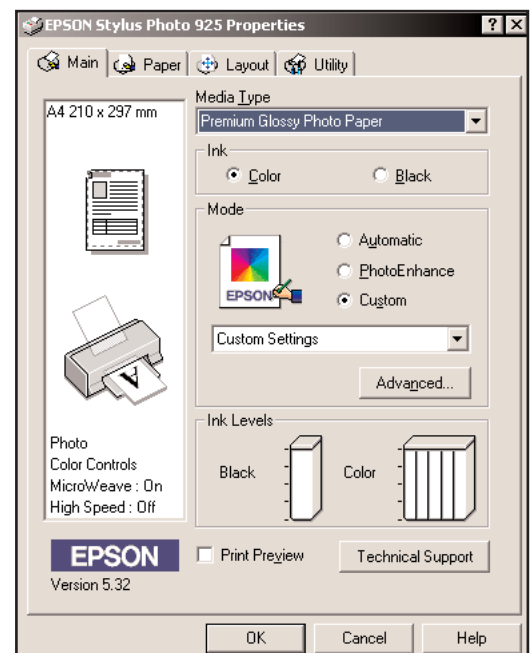
## Step 3

With an image open, go to  
FILE-PAGE SETUP.

Select “Properties”

Media Type: Premium Glossy Photo Paper

Select “Custom” and “Advanced”



## Step 4

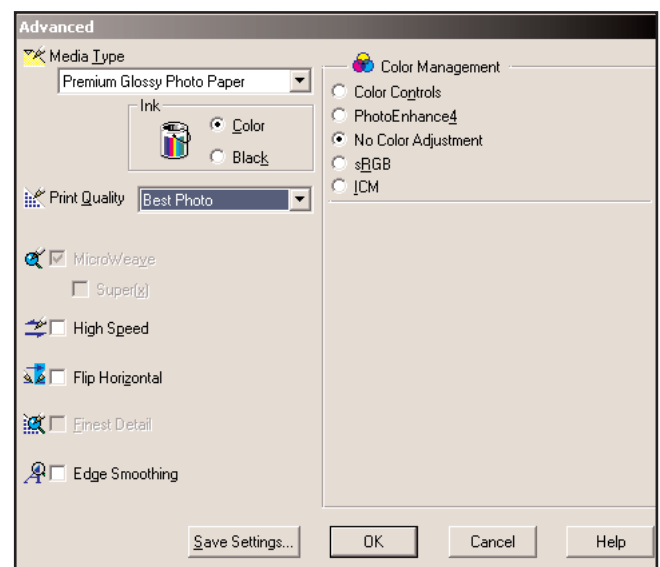
In the “Advanced” menu select the following:

Print Quality: Best Photo

No Colour Adjustment.

Do not select “High Speed” or “Edge Smoothing”

These settings can be saved for easy recall later. Simply select “Save Settings” from the “Advanced” menu and name the settings selected. The settings can then be recalled from the “Custom Settings” drop down menu in the “Properties” screen.



PS 5: Go to FILE-PRINT

Select the printer profile from the “space” drop down menu.

Click on “Print”

PS 6: Go to FILE-PRINT

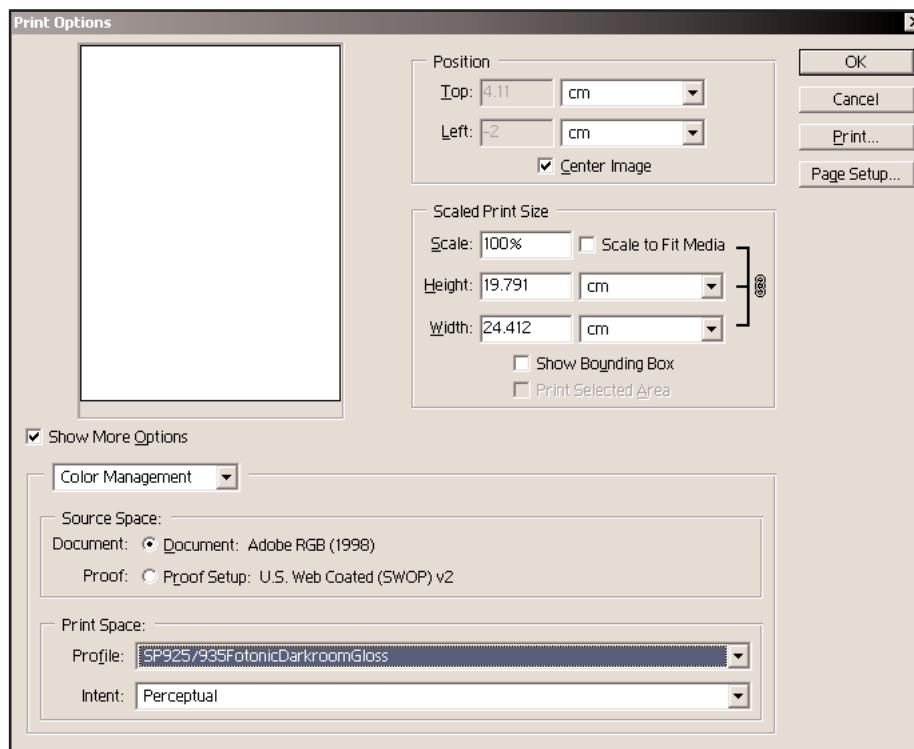
Ensure “Source Space” is set to “Document”.

Select the required printer profile in the

“Print Space; Profile” box.

Select “Perceptual” as the rendering intent.

Click “OK” to start printing.



PS7:

Go to FILE-PRINT PREVIEW

Activate “Show More Options”

Select “Color Management” from the drop down menu. Select the Profile from the “Print Space; Profile” box.

Select “Perceptual” as the rendering intent.

Click Print to start printing.

(The print space: Profile option will be visible every time you go back to FILE-PRINT once these colour management options are activated).

Photoshop 7 users: The profiles posted for the 240gsm Colour Gloss paper and the Darkroom Matt and Gloss papers can also be successfully printed with the “Relative Colormetric” rendering intent. This is because of the control PS7 users have over activating the “Black Point Compensation” option when applying a printer profile as well as the ultra-wide colour gamut achievable by these profiles. Try the following settings:

Darkroom Gloss: Relative Colormetric / Black Point Compensation Off.

Darkroom Matt: Relative Colormetric / Black Point Compensation On.

240gsm Gloss: Relative Colormetric / Black Point Compensation Off.