

## R-8 Colour Management with Profiles

Achieving accurate and predictable results with Lyson PhotoChrome R-8 and Generic Profiles.



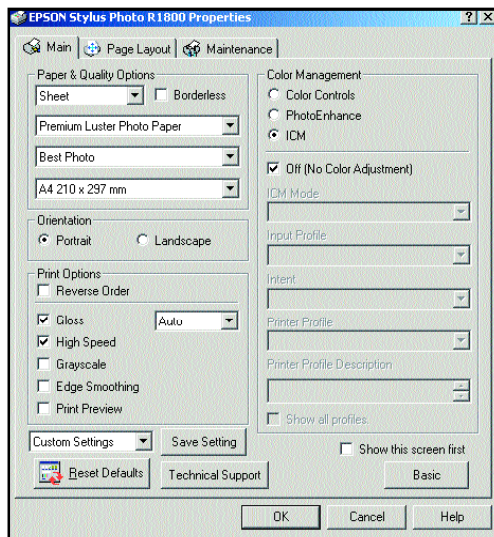
PhotoChrome R-8 is not a precise colour-match to Epson's Ultrachrome K3 inks. However this does not mean that you cannot achieve accurate and predictable colour from Photoshop or any other application which can utilise third party profiles. Lyson have released a selection of "generic" profiles for use with the R-8 inks and a range of recommended media. Follow these instructions to use these generic profiles.

### PC Operating Systems (Windows XP Shown, Other operating systems may vary)

#### 1. Profile Installation:

Right-click on the profile and select "Install Profile" from the context menu.  
Restart Photoshop

#### 2. PC Driver Settings: (Go to FILE...PAGE SETUP: "Properties" / Main Tab: "Advanced")



For **Fine Art Papers** use the following settings:  
**Media: "Watercolour Paper; Radiant White"**  
**Colour Adjustment: "No Colour Adjustment"**  
(be sure to use the rear media feed)

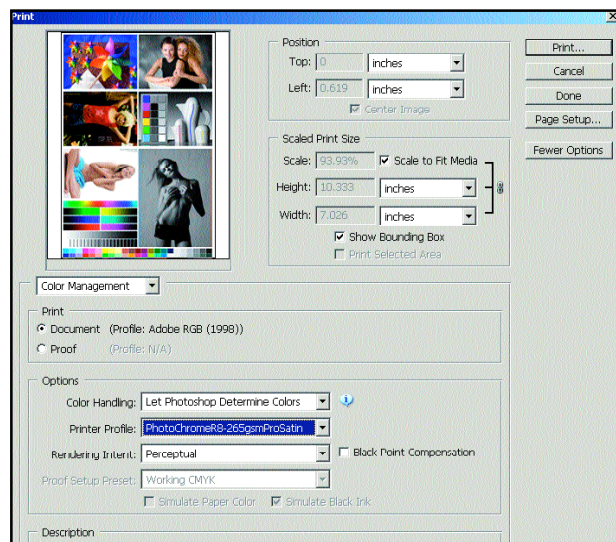
For **Matt papers** including Lyson 170gsm Matt and Epson Archival Matt Paper;  
**Media: "Archival Matt Paper"**  
**Colour Adjustment: "No Colour Adjustment"**

For **Gloss, Satin, and Semi Gloss** papers:  
**Media: "Premium Lustre Photo Paper"**  
**Colour Adjustment: "Adobe RGB, Gamma: 1.8"**

**Resolution: "Best Photo" for all media types.**

#### 3. Selecting the Profile:

Go to FILE - PRINT WITH PREVIEW. Select the profile as shown. Click **Print**.



Note. For generic gloss profiles, any colour cast can be dialled out by adjusting the cyan, magenta, and yellow sliders. Ensure only small adjustments are made as they can have a dramatic effect on the overall tone of the print. Any amount you subtract from a colour should be added to the other two so that the net effect is zero. For example a warm cast could be compensated for by reducing the magenta by -2, and adding +1 to both the yellow and cyan. Due to the settings used for Fine Art and Matt papers this technique cannot be used for these media types. If you see a colour cast with your prints that you cannot compensate for then we recommend asking your dealer about custom profiles.

## Macintosh Operating Systems (OSX10.4 shown, OSX 10.2 and 10.3 may vary)

### 1. Profile Installation:

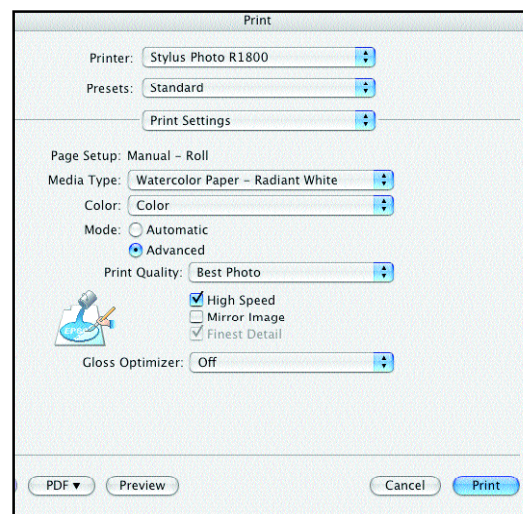
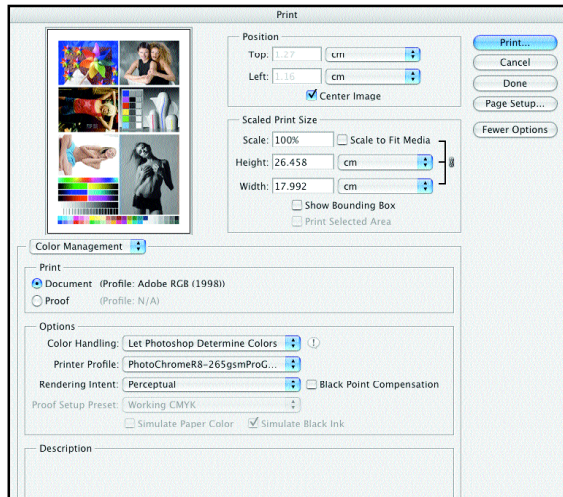
Drag and drop the profile to the following location:

Hard Drive / USERS / (Your name) / LIBRARY / COLORSYNC / PROFILES

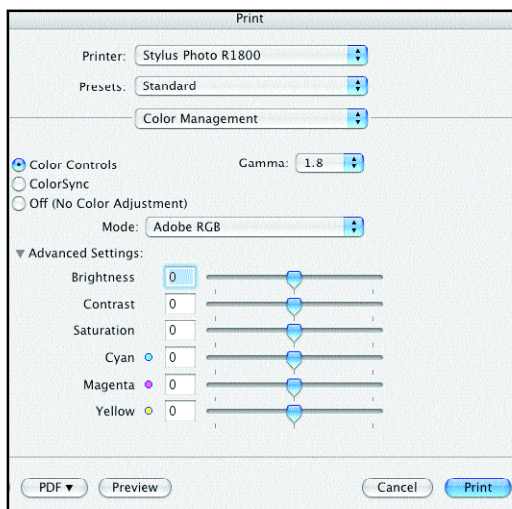
Restart Photoshop

### 2. Selecting the Profile:

Go to FILE - PRINT WITH PREVIEW. Select the profile as shown. Click Print.



### 3. Macintosh Driver Settings:



For **Fine Art Papers** use the following settings:  
**Media: "Watercolour Paper; Radiant White"**  
**Colour Adjustment: "No Colour Adjustment"**  
(be sure to use the rear media feed)

For **Matt papers** including Lyson 170gsm Matt;  
**Media: "Archival Matt Paper"**  
**Colour Adjustment: "No Colour Adjustment"**

For **Gloss, Satin, and Semi Gloss** papers:  
**Media: "Premium Lustre Photo Paper"**  
**Colour Adjustment: "Adobe RGB, Gamma: 1.8"**

**Resolution: "Best Photo" for all media types.**

### 4. Click "PRINT" to start printing.

Note. For generic gloss profiles, any colour cast can be dialled out by adjusting the cyan, magenta, and yellow sliders. Ensure only small adjustments are made as they can have a dramatic effect on the overall tone of the print. Any amount you subtract from a colour should be added to the other two so that the net effect is zero. For example a warm cast could be compensated for by reducing the magenta by -2, and adding +1 to both the yellow and cyan. Due to the settings used for Fine Art and Matt papers this technique cannot be used for these media types. If you see a colour cast with your prints that you cannot compensate for then we recommend asking your dealer about custom profiles.