



**This document explains how to install the ICC Printer profiles for the Canon i850, i950 and i9100 with Lyson Fotonic Inks. There are five profiles available which are suitable for the following papers:**

**Lyson 170gsm Matt Paper.**

**Lyson 240gsm Professional Colour Photo Gloss Paper.**

**Lyson Fine Art Paper (All Varieties).**

**Lyson Darkroom Gloss Paper**

**Lyson Darkroom Matt Paper**

**Using the profiles is a simple process. Once you have made the correct settings in the print driver you can then select the profile for your paper and the software will do the rest.**

**For more information on how ICC printer profiles work, setting up Photoshop and calibrating your monitor for accurate colour display, as well as frequently asked questions and troubleshooting, download the “Colour Management 2003” pdf document from the Technical page of the Lyson website, [www.lyson.com](http://www.lyson.com).**

**If your print driver does not show all the options listed opposite you may need to update your print driver. Updates are released on the Canon website ([www.canon.com](http://www.canon.com)) and can be easily downloaded and installed. If you do not delete your existing driver before installation the new driver will appear as a copy (1).**

### **PC Setup Advice.**

Photoshop places heavy demands upon your PC. Ensure that you have as much RAM installed as you can afford.

There are a large variety of windows operating systems on the market today. Photoshop performance varies only slightly from one operating system to another. Lyson recommends Windows 2000 due to the length of time it has been on the market and it's support for the largest number of print drivers. Lyson printer profiles are compatible with all Microsoft® operating systems.

# Canon i850/i950/i9100 Printer Profile Instructions

PC, Photoshop 5/6/7

## Step 1.

Drag and drop or cut & paste the profiles into the “Color” folder

C:/WINDOWS/system32/spool/drivers/color

(windows XP/ Windows 2000)

C:/windows/system/color (Windows 95/8)

C:/winNT/system32/color (WindowsNT)

## Step 2.

Restart Photoshop.

## Step 3

With an image open, go to  
FILE-PAGE SETUP.

Select “Properties”

i850 Media Type: Glossy Photo Paper

i950 Media Type: Photo Paper Plus Glossy

## Step 4

Under PRINT QUALITY select “Custom”  
and click “Set”

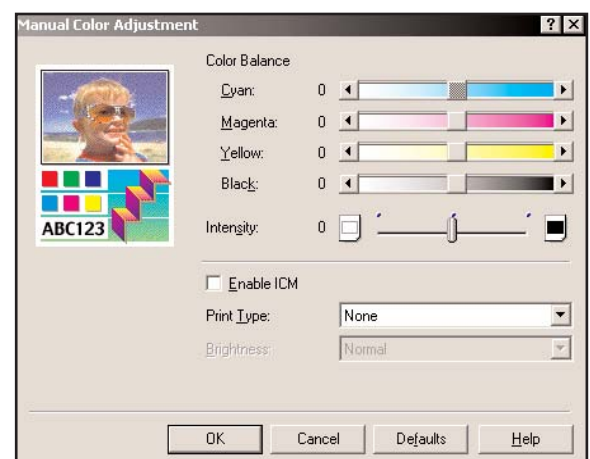
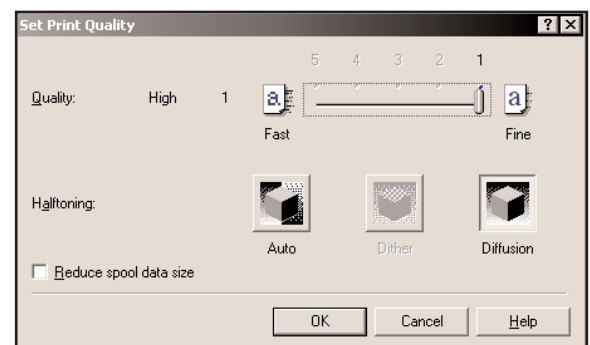
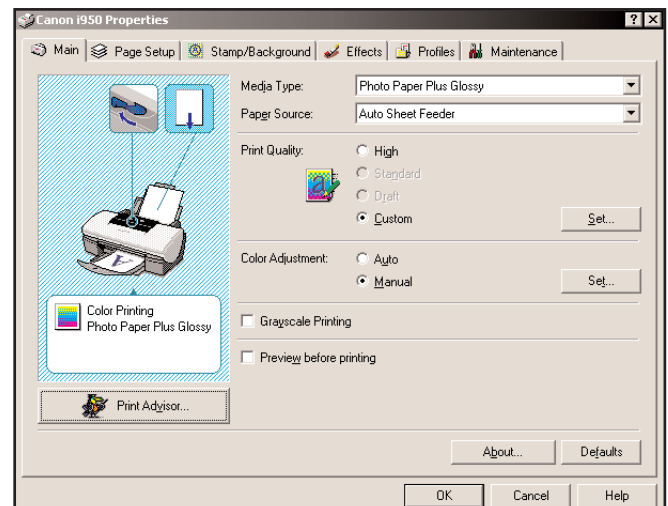
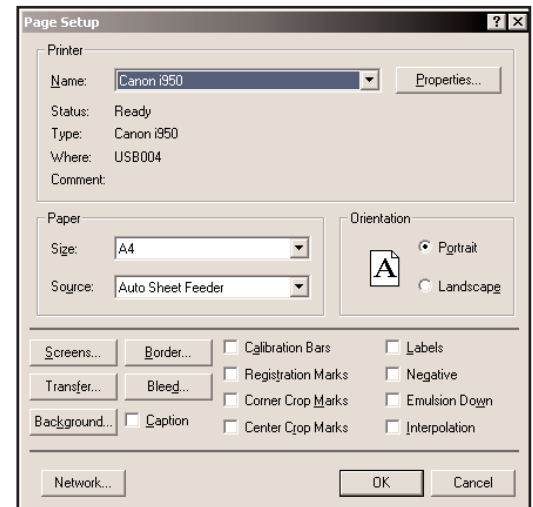
Ensure the Quality slider is at “1”

Select “OK”

Under COLOR ADJUSTMENT select  
“Manual” and click “Set”

In the PRINT TYPE drop down menu select  
“None”

These settings can be stored by saving them as a “Profile”. This is not to be confused with an ICC Printer Profile such as the one this document is explaining how to install and use. Go to the “Profiles” tab at the top of the Properties menu and select a symbol and a name for these particular driver settings. The settings can be easily and quickly returned to whenever needed.



## PS 5: Go to FILE-PRINT

Select the printer profile from the “space” drop down menu.  
Click on “Print”

## PS 6: Go to FILE-PRINT

Ensure “Source Space” is set to “Document”.  
Select the required printer profile in the  
“Print Space; Profile” box.  
Select “Perceptual” as the rendering intent.  
Click “OK” to start printing.

## PS7:

### Go to FILE-PRINT PREVIEW

Activate “Show More Options”

Select “Color Management” from the drop down menu. Select the  
Profile from the “Print Space; Profile” box.  
Select “Perceptual” as the rendering intent.  
Click Print to start printing.  
(The print space: Profile option will be visible every time you go back  
to FILE-PRINT once these colour management options are activated).

