



This document explains how to install the ICC Printer profiles for the Epson Stylus Photo 1270 with Lyson Fotonic Inks. There are two profiles available which are suitable for the following papers:

Lyson 170gsm Matt Paper.

Lyson 180gsm Fast Dry Gloss Paper.

Lyson 230gsm Gloss Paper.

Lyson 260g “Pro” Gloss / Satin Paper.

Lyson Fine Art Paper (All Varieties).

PC Setup Advice.

Photoshop places heavy demands upon your PC. Ensure that you have as much RAM installed as you can afford.

In the “Preferences-Plug Ins and Scratch Disk” menu of Photoshop ensure your four Scratch Disk options are allocated to your internal Hard Drive. This allows Photoshop to use your Hard Drive to store temporary data when there is no more RAM available. Never use an external Hard Drive as a Scratch Disk as this will slow Photoshop down.

In the “Preferences-Memory and Image Cache” menu allocate 100% of your system memory to Photoshop. PCs will dynamically allocate RAM according to the number of applications open. Setting the memory allocation to 100% ensures that Windows is able to give Photoshop as much RAM as possible.

Using the profiles is a simple process. Once you have made the correct settings in the print driver you can then select the profile for your paper and the software will do the rest.

For more information on how profiles work, setting up Photoshop and calibrating your monitor for accurate colour display, as well as frequently asked questions and troubleshooting, download the “Epson Colour Management” pdf document from the Technical page of the Lyson website, www.lyson.com.

Before using Lyson inks in your printer, ensure that you have followed the instructions for re-setting the Epson chip and placing it on your Lyson cartridge. Do not re-use your Lyson cartridge.

Epson Stylus Photo 1270 Printer Profile Instructions

PC, Photoshop 5/6

Step 1.

Drag and drop the profiles into the “Color” folder

C:/Windows/System/Color (win 9x)

C:/Windows/system32/spool/drivers/color
(win2000)

Step 2.

Restart Photoshop.

Step 3.

With an image open, go to

FILE-PAGE SETUP.

Select “Properties”

Select “Custom” and then “Advanced”

Step 4

Select “Photo Quality Glossy Film”

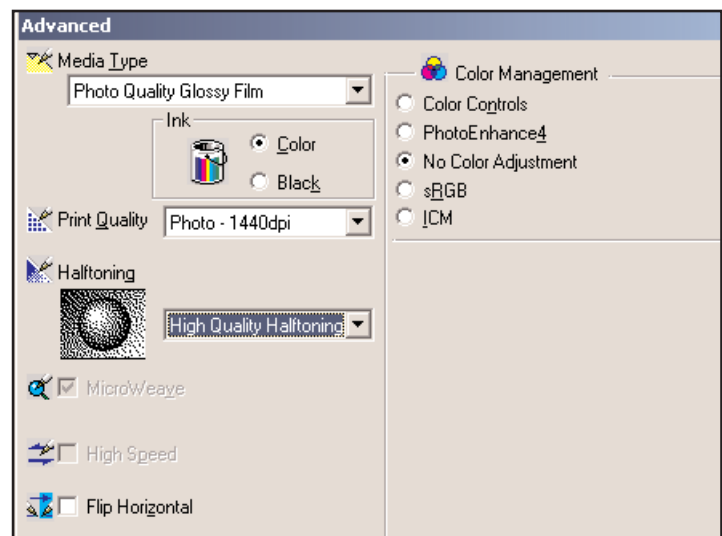
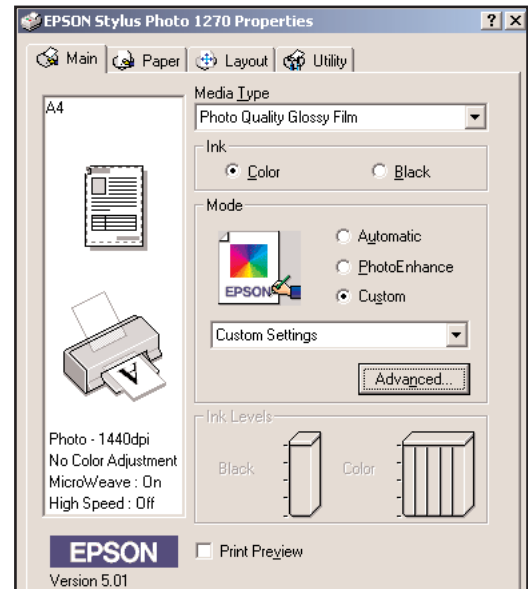
as the Media Type.

Select “Photo-1440dpi” as the Print
Quality.

Select “High Quality Halftoning”

Select “No Colour Adjustment” from
the Color Adjustment options.

Click “OK”



Step 5.

Go to **FILE-PRINT**

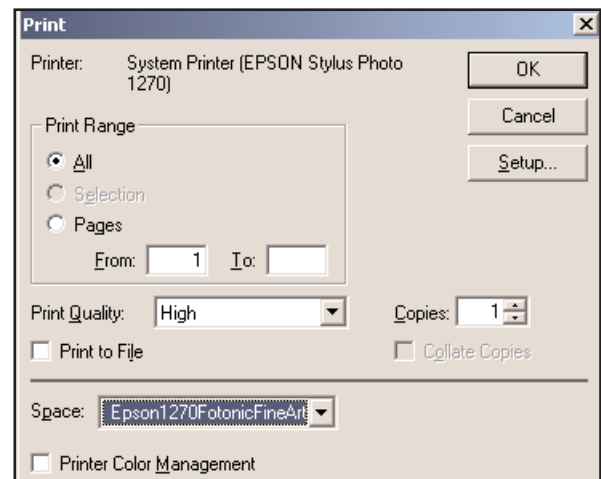
Select the Profile for your preferred
media in the “Space” drop down menu.

Photoshop 6 only.

Ensure “Source Space” is set to “Document”.

Select the required printer profile in the
Print Space; Profile” box.

Select “Perceptual” as the rendering intent.



Step 6.

Now click “Print”.